

ΑΓΓΕΙΟΠΛΑΣΤΙΚΗ ΣΕ ΝΟΣΟ ΤΡΙΩΝ ΑΓΓΕΙΩΝ ΜΕ ΠΛΗΡΗ ΑΠΟΦΡΑΞΗ ΤΗΣ ΔΕΞΙΑΣ ΣΤΕΦΑΝΙΑΙΑΣ ΑΡΤΗΡΙΑΣ

Χ.ΓΡΑΙΔΗΣ, Δ.ΔΗΜΗΤΡΙΑΔΗΣ, Α.ΝΤΑΤΣΙΟΣ, Β.ΚΑΡΑΣΑΒΙΔΗΣ

ΑΙΜΟΔΥΝΑΜΙΚΟ ΕΡΓΑΣΤΗΡΙΟ EUROMEDICA-ΚΥΑΝΟΥΣ ΣΤΑΥΡΟΣ



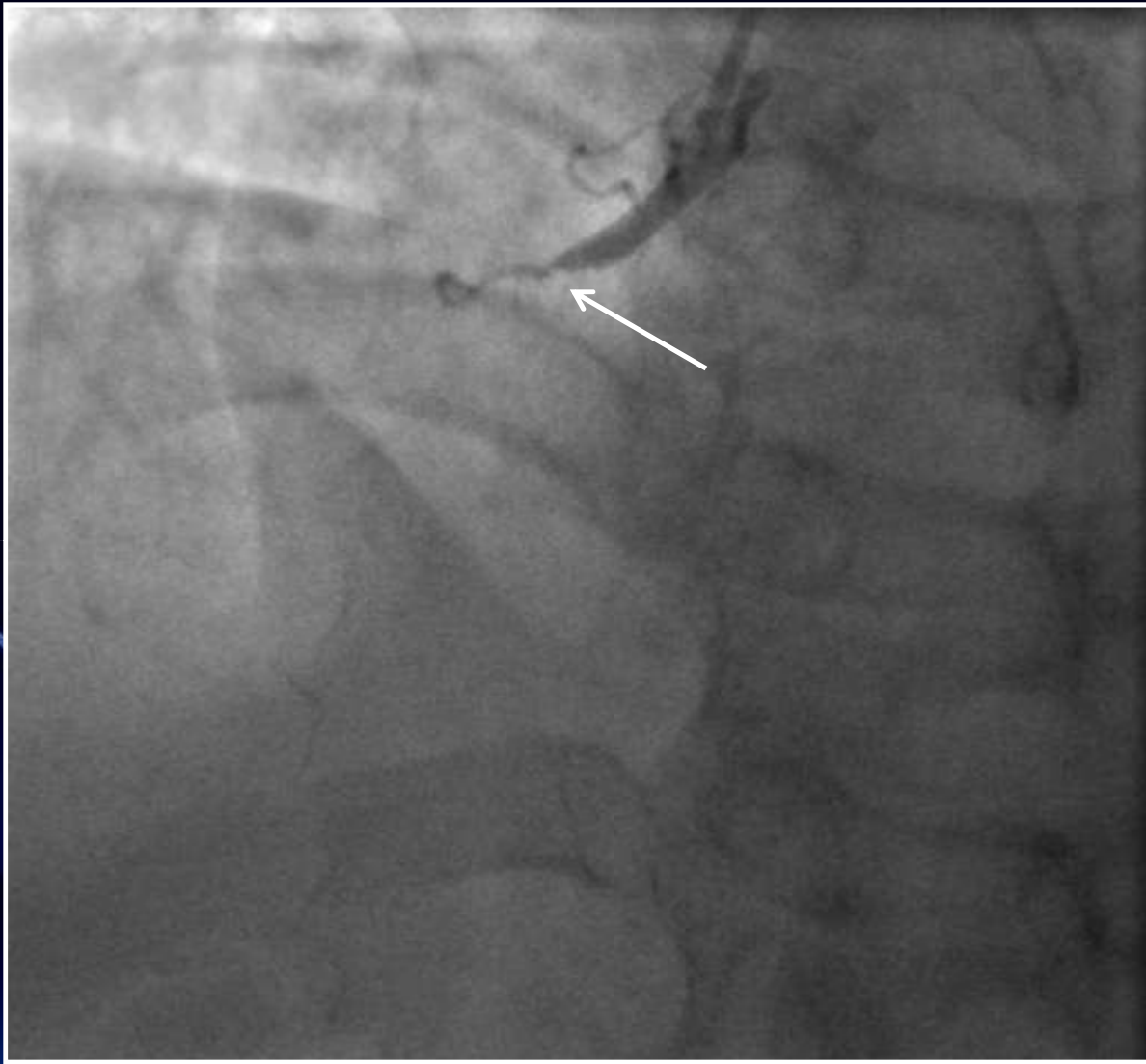
ΕΛΛΗΝΙΚΟ ΙΝΣΤΙΤΟΥΤΟ ΚΑΡΔΙΑΓΓΕΙΑΚΩΝ ΝΟΣΗΜΑΤΩΝ

CASE REPORT

- **43 y.o. male with a recent NSTEMI was referred for cardiac catheterisation.**
- **Risk factors for ischaemic heart disease: Hypertension, Dyslipidaemia, 38 pack-years history of Smoking.**
- **No other significant past medical history.**
- ***Baseline Medications: Aspirin 100 mg od, Clopidogrel 75mg od, Enoxaparin 80mg bd, Metoprolol 25mg bd, Ramipril 5mg od, Atorvastatin 20mg od.***
- **Physical examination unremarkable.**
- **ECG: SR, T wave inversion in the inferior leads.**
- **ECHO: LVEF 45%, hypokinesia of the inferior wall.**



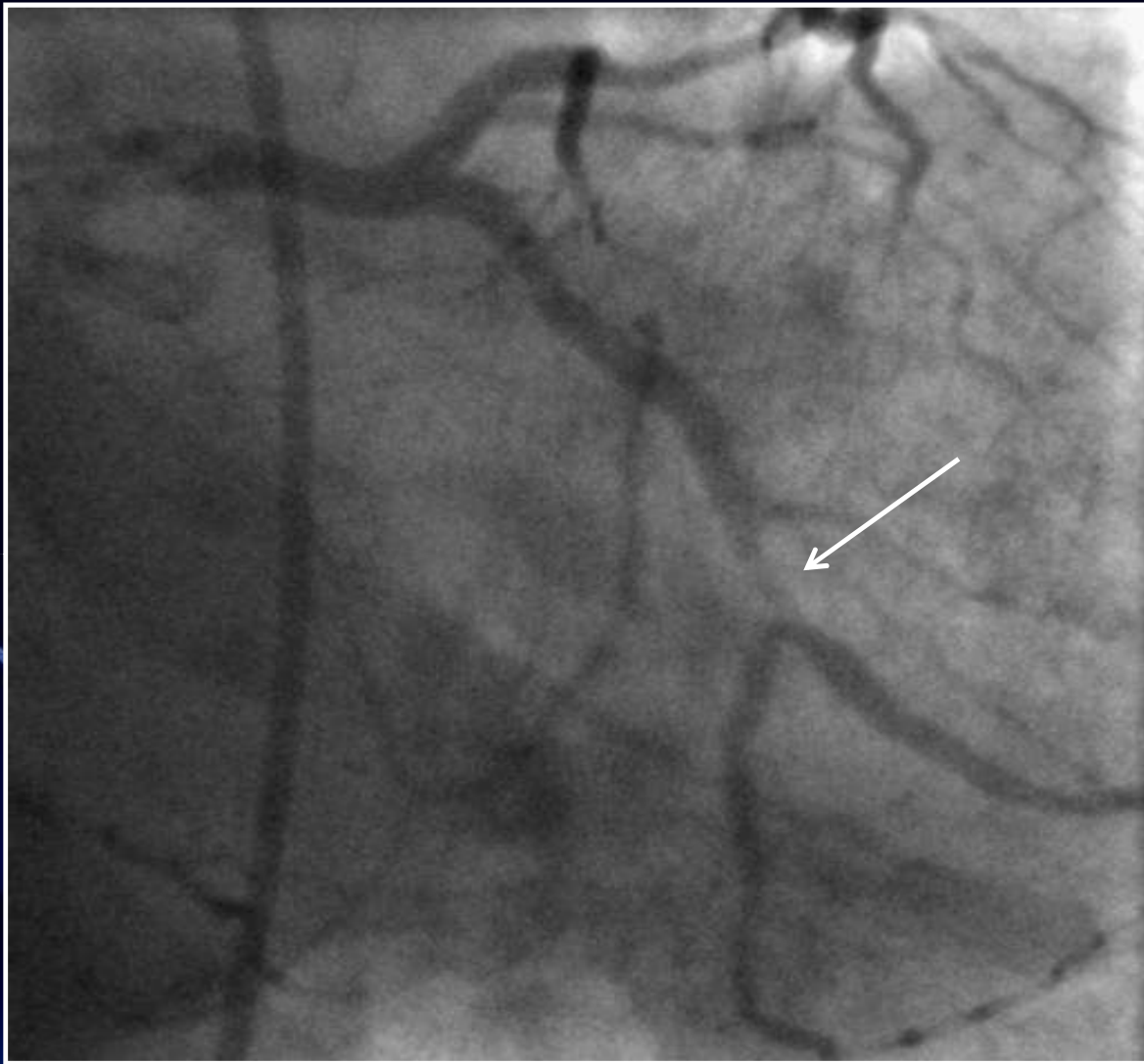
Coronary Angiography



**Total occlusion of the Right
Coronary Artery at its proximal
segment.**



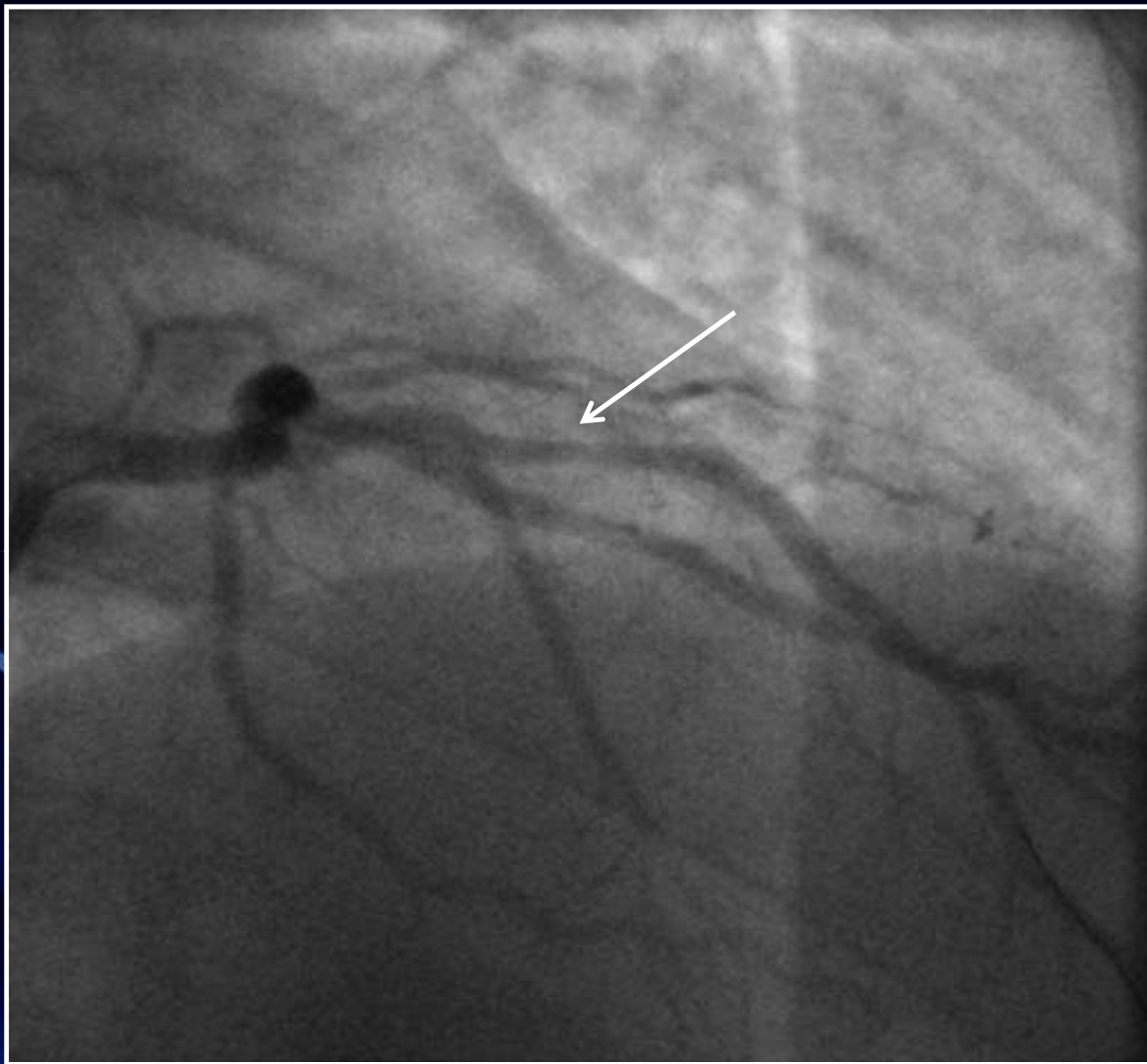
Coronary Angiography



Severe bifurcation lesion of the Circumflex.



Coronary Angiography



Significant stenosis of the Left Anterior Descending.



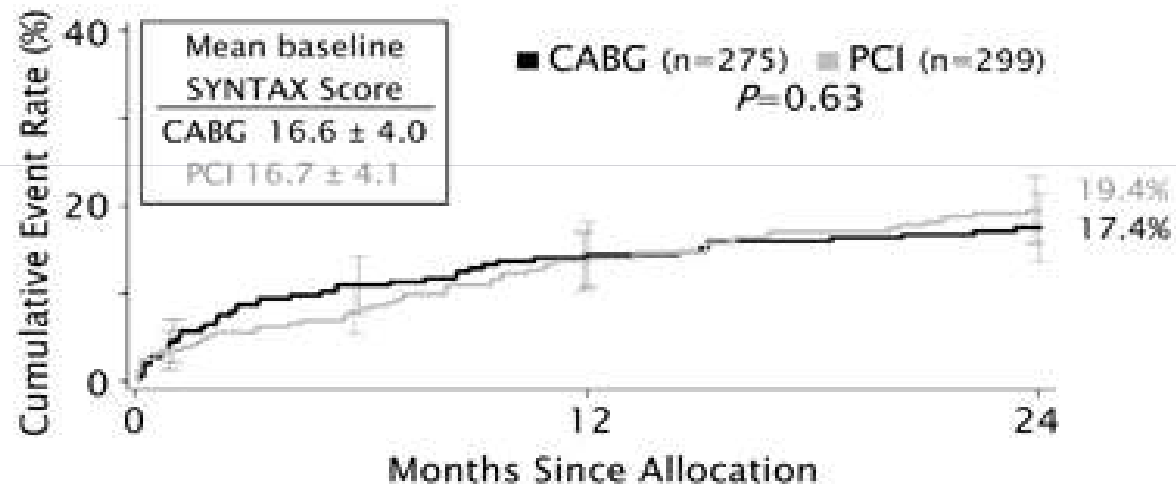
MANAGEMENT OPTIONS:

- 1. Three vessel PCI with Drug-Eluting Stents?**
- 2. Coronary Artery Bypass Grafting?**



SYNTAX Score for our patient 21

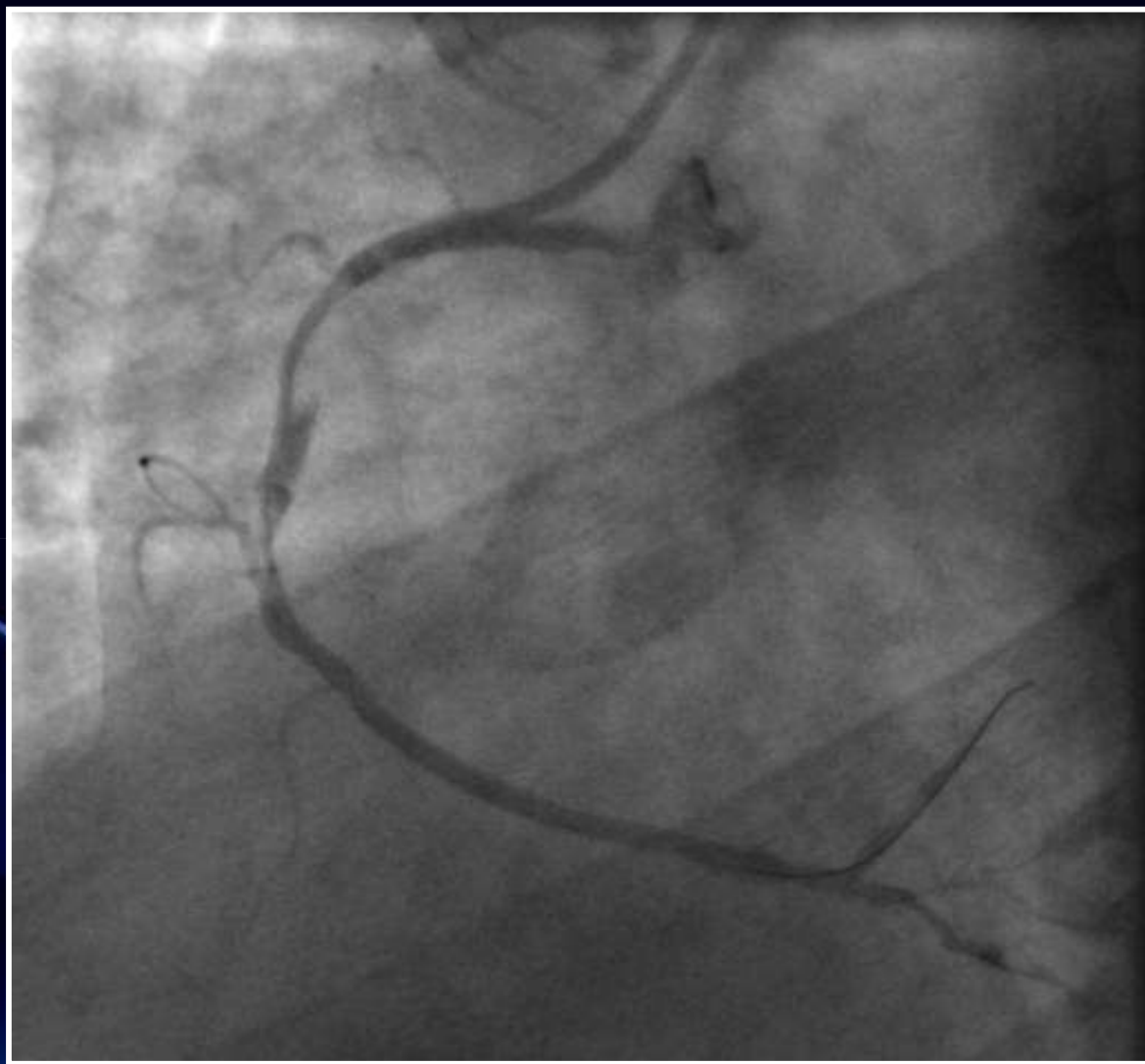
MACCE by SYNTAX Score 0-22



The cumulative MACCE rate is displayed for the SYNTAX Trial group this score corresponds to.



PCI RCA



Οδηγός καθετήρας XBRCΑ 4SH

Οδηγό σύρμα Miracle 3

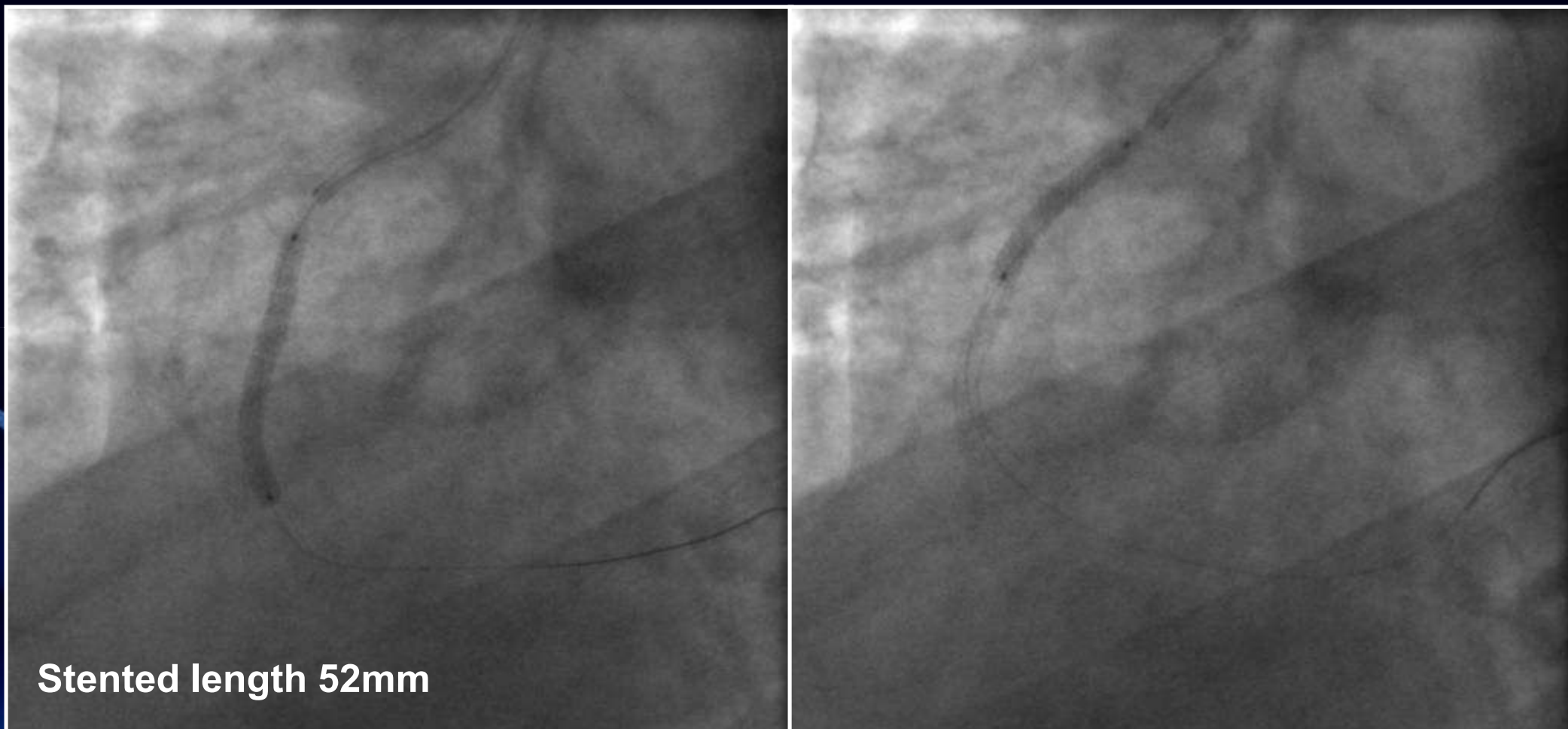
**Διαστολή με μπαλόνι Sapphire
1.5X15mm στη συνέχεια με 2.0X15
mm**



PCI RCA

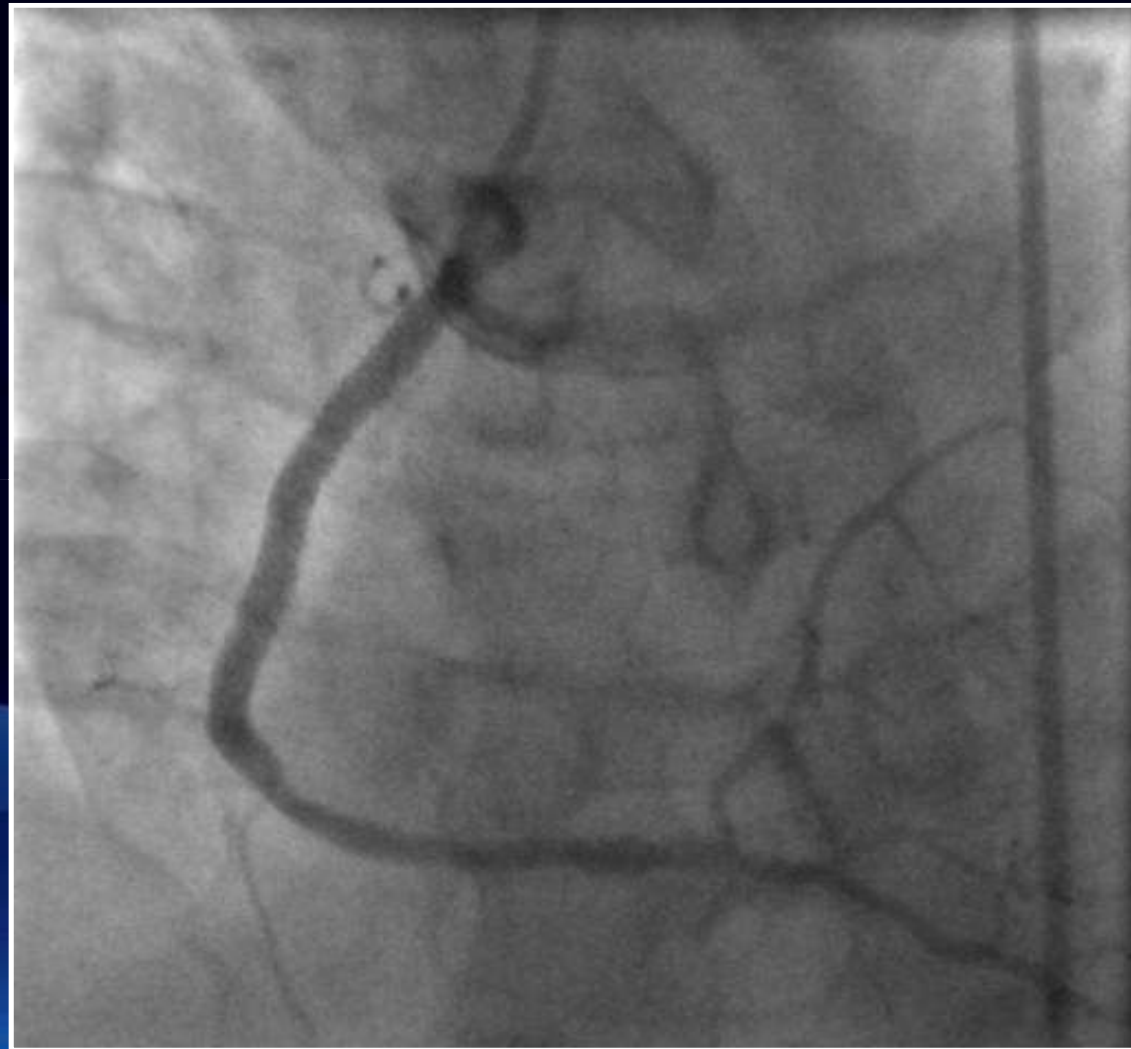
Promus Element 3.0x32mm and 3.5x20mm

Postdilatation with Sapphire NC 3.5x15mm and 4.0x15mm at 18 Atm

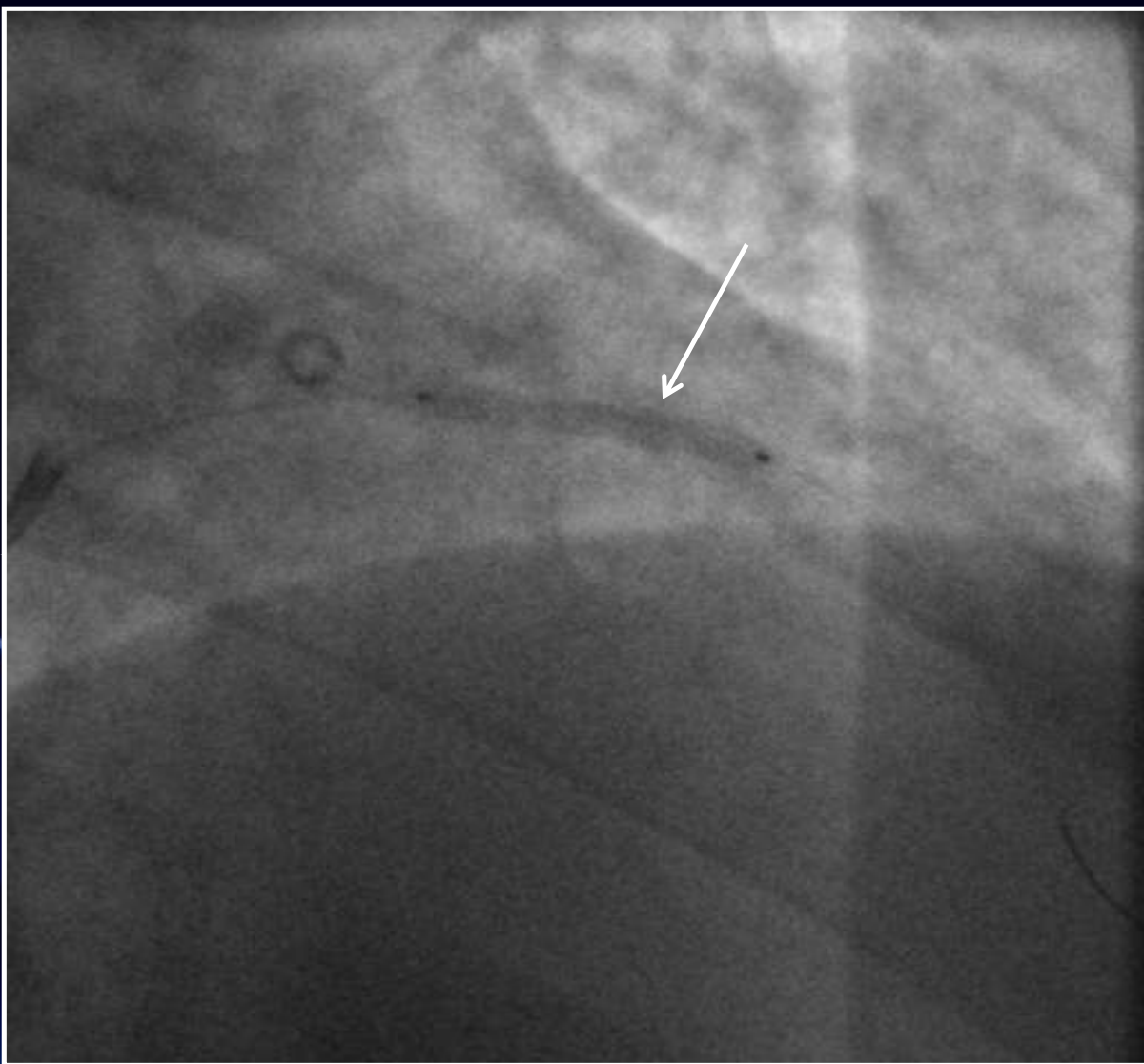


PCI RCA

Final result



PCI LAD

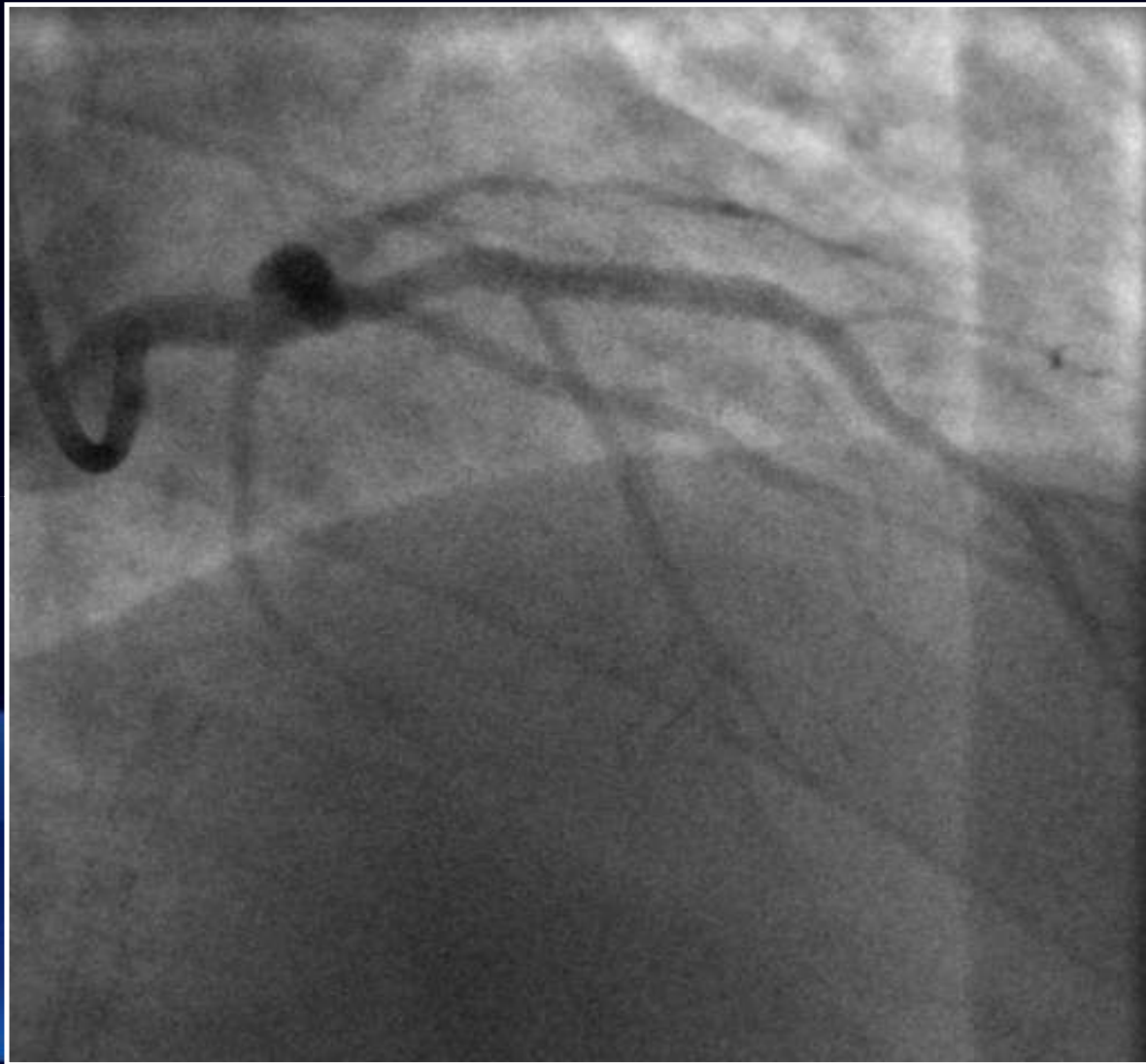


**Promus Element 3.0x24mm and
postdilatation with Sapphire NC
3.5x15mm**



PCI LAD

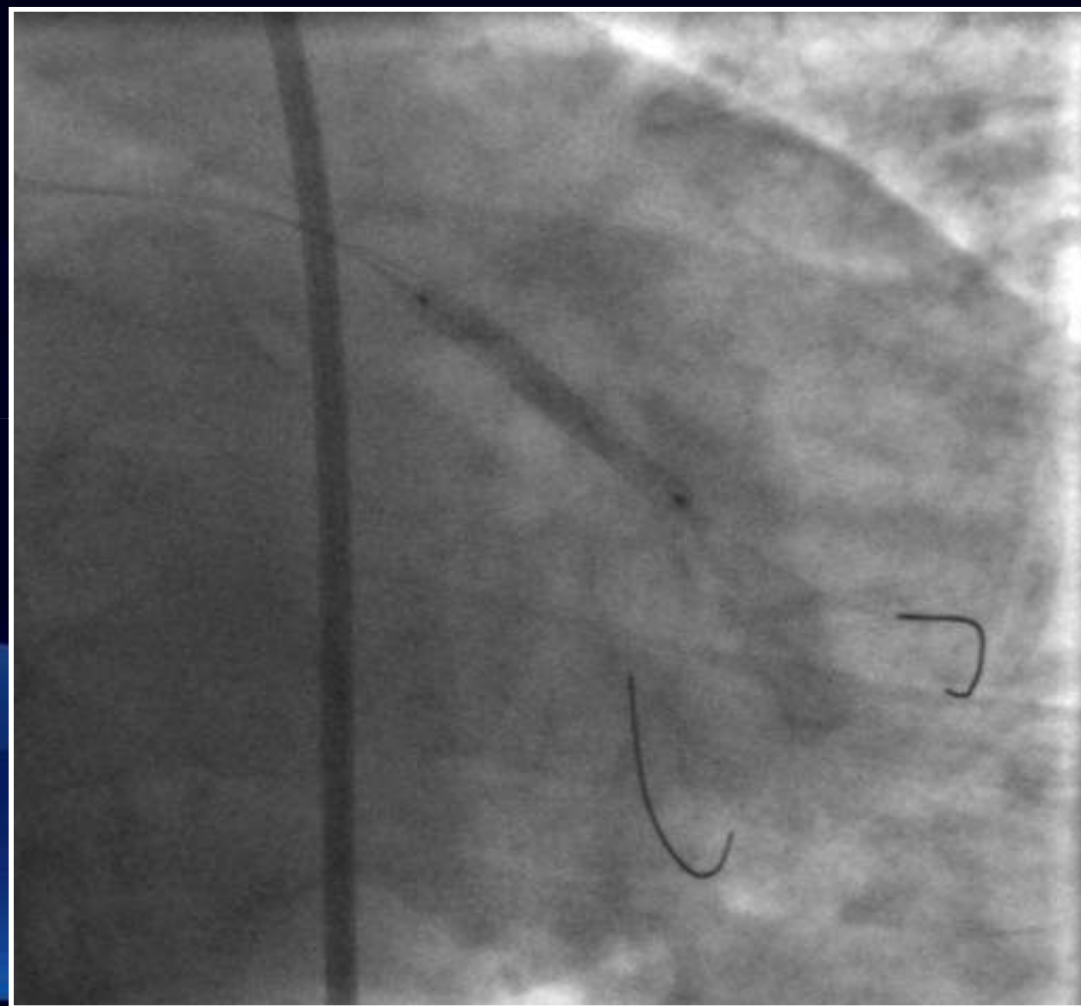
Final result



PCI Cx

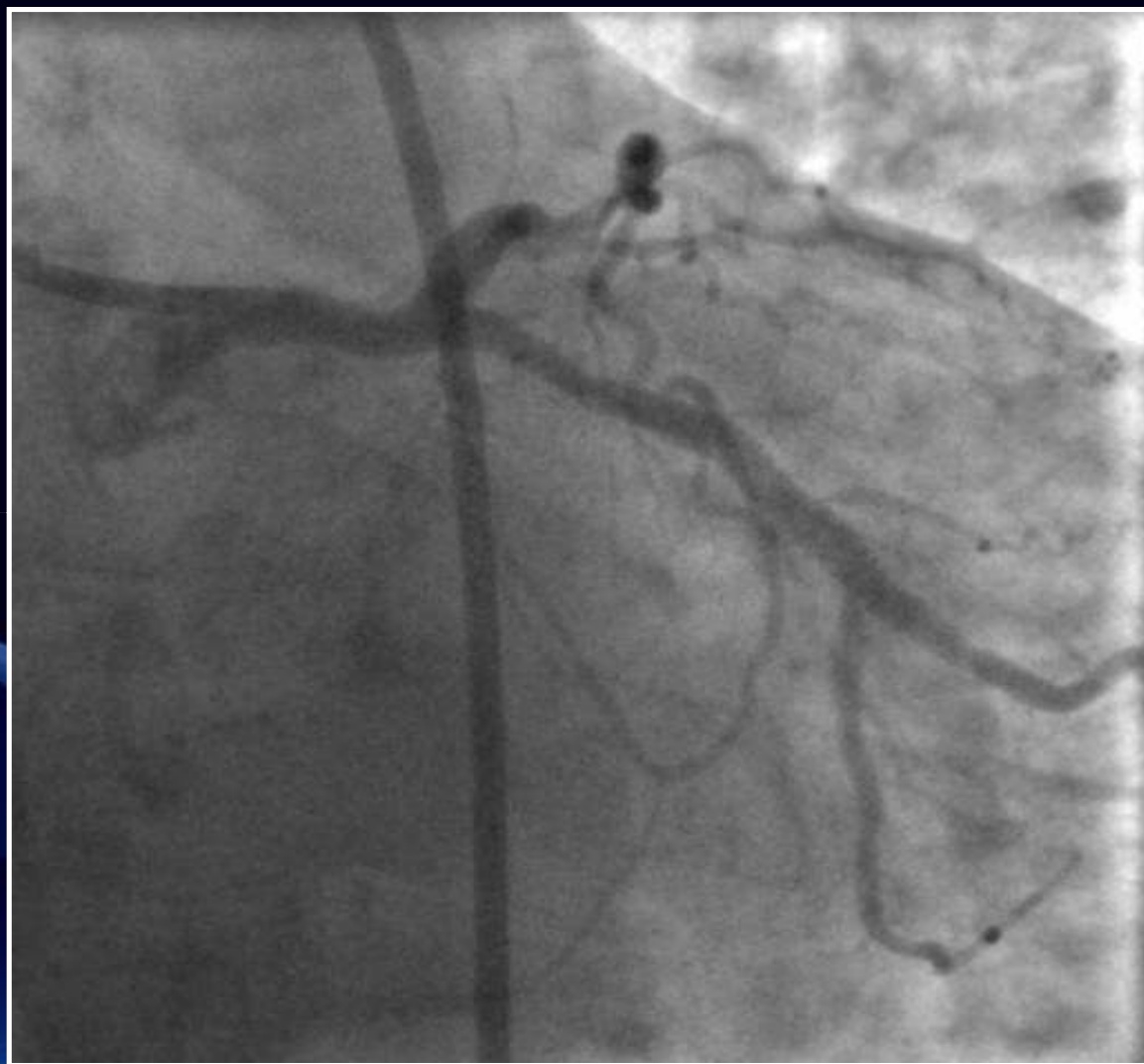
Promus Element 3.0x24mm

Postdilatation with Sapphire NC 3.5x15mm at 22 Atm



PCI Cx

Final result

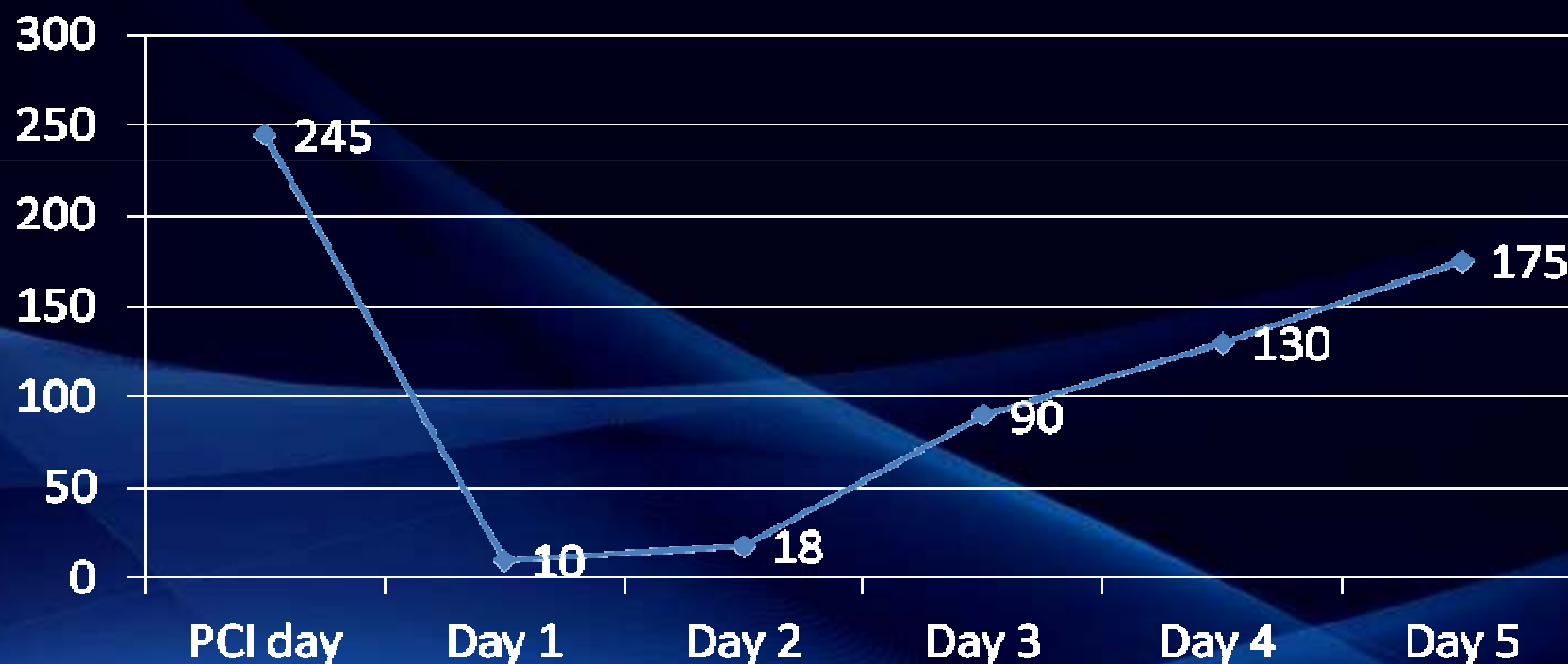


Intavenous infusion of Eptifibatibe started at the cath lab



- One day post PCI patient developed purpuric rash with a Platelet count of 10.000/ μ l.
- No significant haemorrhage.
- Aspirin and Clopidogrel stopped for two days.
- Transfused with 5 U PLT.
- Clopidogrel restarted on day 3 and aspirin on day 4.

Platelet count $\times 10^3/\mu$ l



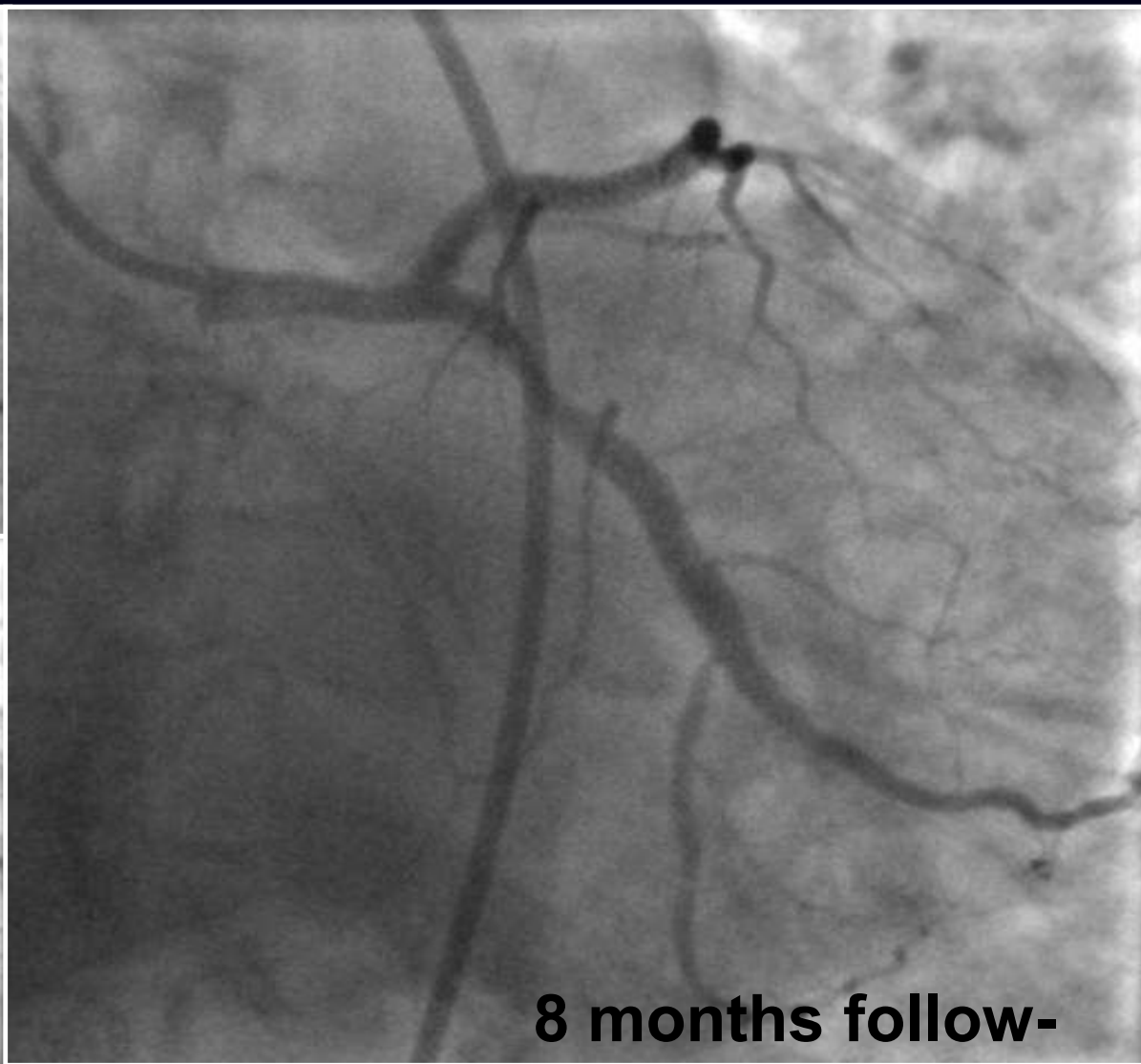
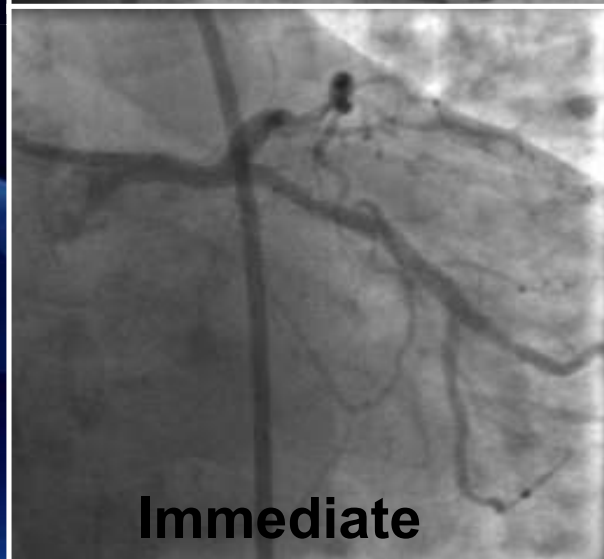
- ❖ Thrombocytopenia likely secondary to GP IIb/IIIa inhibitor administration.
- ❖ No major adverse cardiac events during hospitalisation.



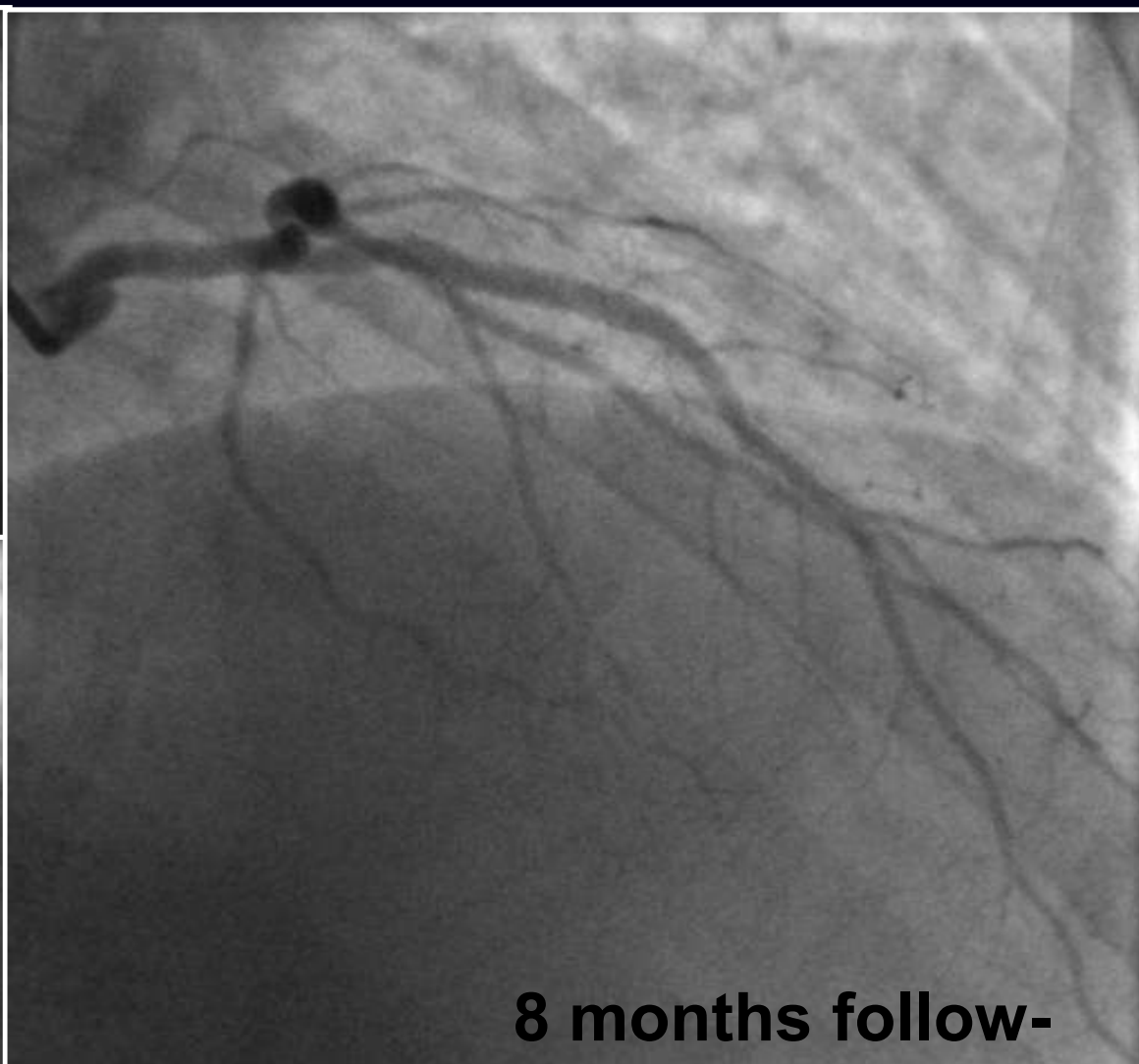
Angiographic follow-up (RCA)



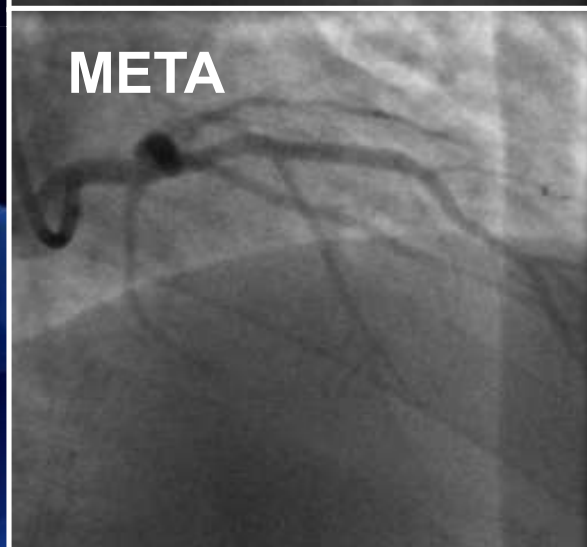
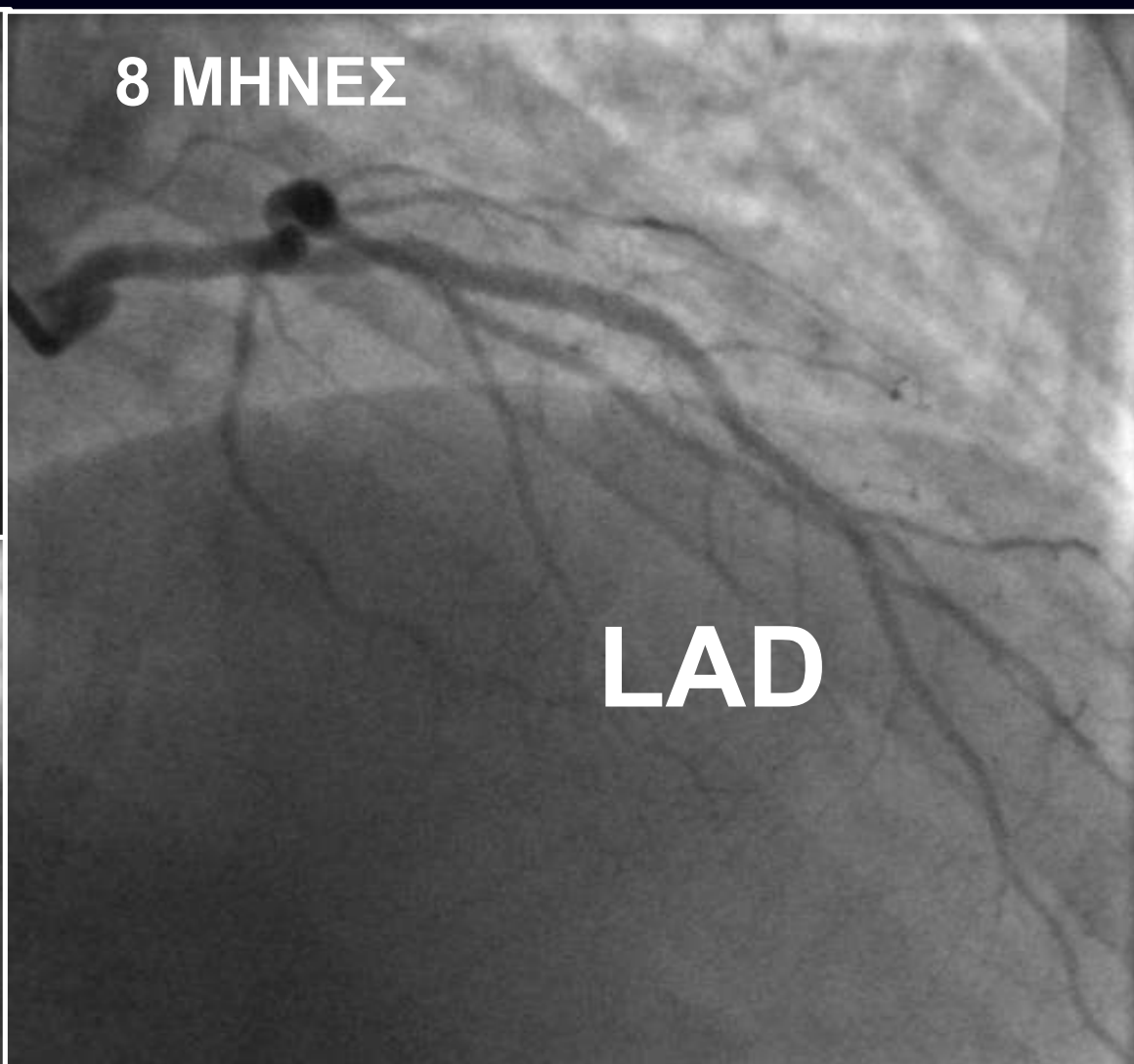
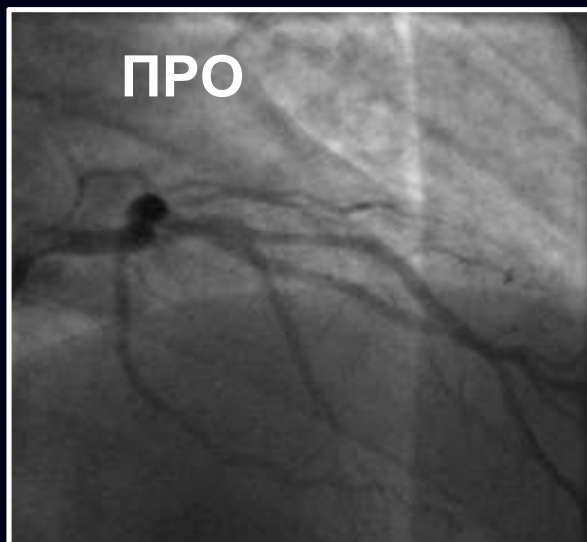
Angiographic follow-up (Cx)



Angiographic follow-up (LAD)



ΑΓΓΕΙΟΓΡΑΦΙΚΟΣ ΕΠΑΝΕΛΕΓΧΟΣ



www.e-cardio.gr



ΕΥΧΑΡΙΣΤΩ!



ΕΛΛΗΝΙΚΟ ΙΝΣΤΙΤΟΥΤΟ ΚΑΡΔΙΑΓΓΕΙΑΚΩΝ ΝΟΣΗΜΑΤΩΝ